

# LYNN TOWNSHIP

Each township has six files containing six sections in each, and one file containing all 36 sections.

Lynn01to06.pdf  
Lynn07to12.pdf  
Lynn13to18.pdf  
Lynn19to24.pdf  
Lynn25to30.pdf  
Lynn31to36.pdf  
LynnAll36.pdf

The points are listed starting with the point above the SE corner and continuing in a counter-clockwise rotation around the section. This normally begins with the East point, Northeast, then North, but may also include Witness Corners, and/or Meander Corners.

## **Definitions**

**Witness Corner:** A witness corner “stands in” when the true corner cannot be monumented or occupied because of difficult terrain or obstruction of the corner sight. The witness corner must be on the section line and is usually 5 or 10 chains away from the true corner.

**Meander Corner:** The intersection of a township, range, or section line and the banks of a navigable stream or meandering body of water.

# CERTIFICATE OF LOCATION OF GOVERNMENT CORNER

East Quarter Corner of Section 25, Township 116 N, Range 30 W, 5th P.M.

STATE OF MINNESOTA, County of McLeod

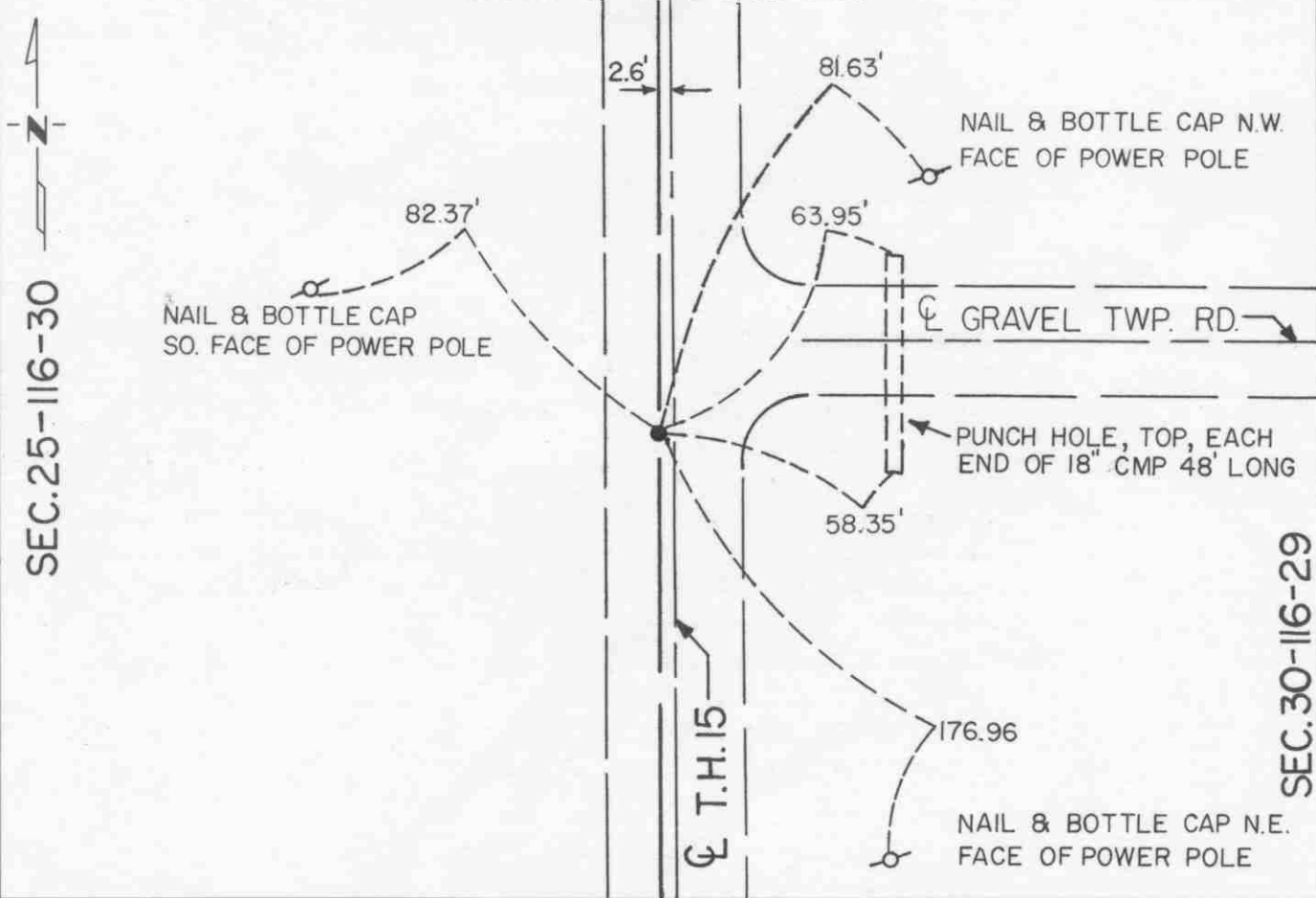
At the corner location shown on the sketch:

On Apr. 16, 1990 found a railroad spike at the road surface  
DATE

left monument as found,  lowered monument,  removed monument (explain)

On \_\_\_\_\_ placed a \_\_\_\_\_  
DATE

### SKETCH OF REFERENCE TIES



SEC. 25-116-30

SEC. 30-116-29

Statement of evidence relative to this corner location is on back of page.

I hereby certify that this document and the data contained herein was prepared by me or under my direct supervision.

Robert Jones  
SIGNATURE

8-20-91  
DATE

Registration No. 11864

Land Surveyor,  Professional Engineer

County Surveyor,  County Engineer

OFFICE OF THE COUNTY RECORDER

County of McLeod

I hereby certify that this document was filed in the Co. Recorders office at 2 P.M. on the 18th day of Sep A.D., 1991

County Recorder Carmen Ostlie

By \_\_\_\_\_, Deputy

DOCUMENT NO. 241064

Statement of Evidence:

East Quarter Corner Section 25, T 116 N, R 30 W

- 1855 - The original Public Land Survey of the township line was completed by John Ryan. A wood post was set over a deposit of charcoal in a dirt mound to mark the corner. Trenches and pits were dug to build the mound. Osage orange was planted at the corners of the mound.
- 1941 - The Minnesota Highway Department right of way map shows the corner to be 2.6 feet west of T.H. 15 P.O.T. 1042+58.5. It was located at the centerline of a north/south road and in line with a fence to the west.
- 1942 - All evidence of the corner was probably destroyed when T.H. 15 was graded.
- 1969 - Dickman Knutson, McLeod County Surveyor, set a spike 2.6 feet west of T.H. 15 station 1042+58.5.
- 1987 - Willard Pellinen, McLeod County Surveyor, set a railroad spike to mark the corner according to the 1969 reference ties. He set additional reference ties.
- 1989 - Willard Pellinen recovered the railroad spike and the reference ties.
- 1990 - R. C. Jones, Registered Land Surveyor with Mn/DOT, found the railroad spike at the road surface and recovered all the reference ties.

The railroad spike is accepted as the corner location because it was found to be 2.52 feet west of T.H. 15 P.O.T. 1042+59.64, which substantially fits previous survey positions, and it is nearly in line with the centerline of a township road to the east.

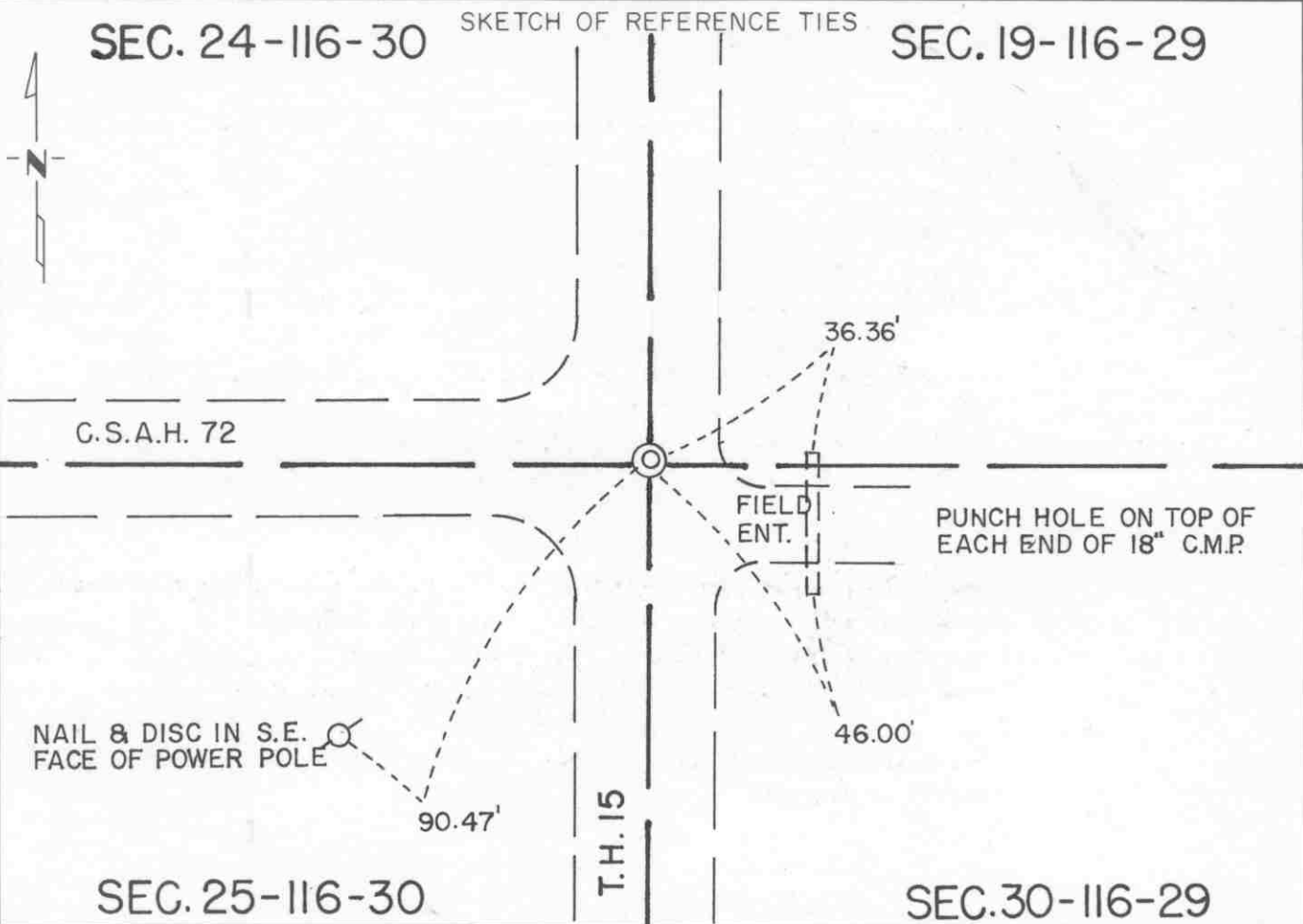
For additional information, contact the Mn/DOT Surveys Section at Willmar, Mn 56201.

# CERTIFICATE OF LOCATION OF GOVERNMENT CORNER

Northeast Corner of Section 25, Township 116 N, Range 30 W, 5th P.M.  
 STATE OF MINNESOTA, County of McLeod

At the corner location shown on the sketch:

- On Apr. 16, 1990 found a railroad spike at the road surface  
DATE
- left monument as found,  lowered monument,  removed monument (explain)
- On \_\_\_\_\_ placed a \_\_\_\_\_  
DATE



Statement of evidence relative to this corner location is on back of page.

I hereby certify that this document and the data contained herein was prepared by me or under my direct supervision.

Robert Jones      8-26-91  
SIGNATURE      DATE

Registration No. 11864

Land Surveyor,  Professional Engineer

County Surveyor,  County Engineer

OFFICE OF THE COUNTY RECORDER  
 County of McLeod

I hereby certify that this document was filed in the Co. Recorders office at 2 P.M. on the 18th day of Sep A.D. 1991

County Recorder Carmen Ostlie  
 By \_\_\_\_\_, Deputy  
 DOCUMENT NO. 241063

Statement of Evidence:

Northeast Corner Section 25, T 116 N, R 30 W

- 1855 - The original Public Land Survey of the township line was completed by John Ryan. A wood post was set over a deposit of charcoal in a dirt mound to mark the corner. Trenches and pits were dug to build the mound. Osage orange was planted at the corners of the mound.
- 1941 - The Minnesota Highway Department right of way map shows that a stone was found at T.H. 15 P.O.T. 1069+27.0. It was located at the centerline of a north/south road, at the centerline of a road west, and in line with a fence to the east.
- 1942 - All evidence of the corner was probably destroyed when T.H. 15 was graded.
- 1969 - Dickman Knutson, McLeod County Surveyor, found a nail and disc marking the corner at the road surface. It was at T.H. 15 station 1069+27.0.
- 1987 - Willard Pellinen, McLeod County Surveyor, set a railroad spike at the road surface to mark the corner. He used the 1969 reference ties to set the corner and set additional ties.
- 1989 - Willard Pellinen recovered the railroad spike and all the reference ties.
- 1990 - R. C. Jones, Registered Land Surveyor with Mn/DOT, found the railroad spike at the road surface. One of the reference ties was missing.

The railroad spike is accepted as the corner location because it was found to be 0.42 feet east of T.H. 15 P.O.T. 1069+27.94, which substantially fits the right of way map location, and it is in line with the centerline of C.S.A.H. 72 to the west.

For additional information, contact the Mn/DOT Surveys Section at Willmar, Mn 56201.

# CERTIFICATE OF LOCATION OF GOVERNMENT CORNER

North Quarter Corner of Section 25, Township 116 N, Range 30 W, 5th P.M.

STATE OF MINNESOTA, County of McLeod

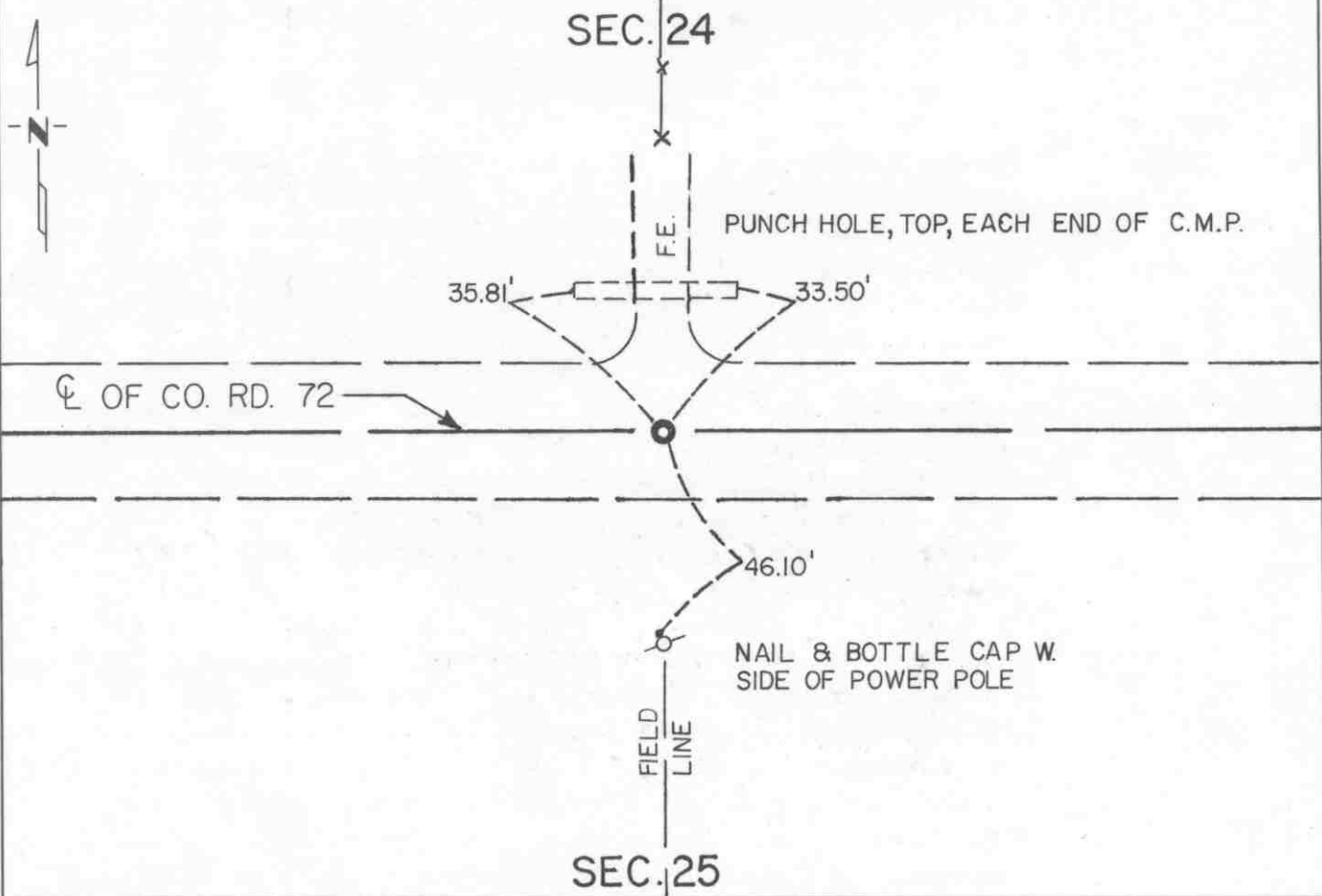
At the corner location shown on the sketch:

On Apr. 16, 1990 found a cast iron monument at the road surface  
DATE

left monument as found,  lowered monument,  removed monument (explain)

On \_\_\_\_\_ placed a \_\_\_\_\_  
DATE

SKETCH OF REFERENCE TIES



Statement of evidence relative to this corner location is on back of page.

I hereby certify that this document and the data contained herein was prepared by me or under my direct supervision.

Robert Jones  
SIGNATURE

8-20-91  
DATE

Registration No. 11864

Land Surveyor,  Professional Engineer

County Surveyor,  County Engineer

OFFICE OF THE COUNTY RECORDER

County of McLeod

I hereby certify that this document was filed in the Co. Recorders office at 2 P .M. on the 18th day of sep A.D. 1991

County Recorder Carmen Ostlie

By \_\_\_\_\_, Deputy

DOCUMENT NO. 241065

Statement of Evidence:

North Quarter Corner Section 25, T 116 N, R 30 W

- 1855 - The original Public Land Survey was completed by Thomas Simpson. A wood post was set over a charred stake in a dirt mound to mark the corner. Trenches and pits were dug to build the mound. Osage orange was planted at the northeast and southwest corners of the mound.
- 1974 - Dickman Knutson, McLeod County Surveyor, interviewed four area residents. Ken Sturges, age 58, had lived in the NW 1/4 of Section 25 for 28 years, said that the field line to the south is located in the same place as the old fence was. He said it was on the north/south quarter line. John Ball, age 36, had lived in the SE 1/4 of Section 24 since 1940, and G. Birk, age 69, had lived in the NE 1/4 Section 25 since 1930, both agreed with Mr. Sturges. Erwin Kruger, age 74, had lived in the SW 1/4 of Section 24 all his life, said the fence running north is on the quarter line.
- 1980 - Willard Pellinen, McLeod County Surveyor, set a 1/2" diameter iron pipe at the centerline of the east/west county road, in line with a fence line north, and in line with a field division south. The distance measured from the northwest corner of Section 25 to the north quarter corner was 2649.90 feet and from the northeast corner of Section 25 to the north quarter corner was 2651.95 feet. The McLeod County Highway Department measured the distances in 1948 and they were 2650.0 feet and 2652.05 feet respectively. Later on in the same year a McLeod County cast iron monument was set to replace the iron pipe. Reference ties were set.
- 1989 - Willard Pellinen recovered the cast iron monument and all of the reference ties.
- 1990 - R. C. Jones, Registered Land Surveyor with Mn/DOT, found the cast iron monument at the road surface and recovered all the reference ties.

The cast iron monument is accepted as the corner location because it fits long standing occupation lines, the testimony of several area residents, and it is on line between section corners and 0.99 feet west of the lost location.

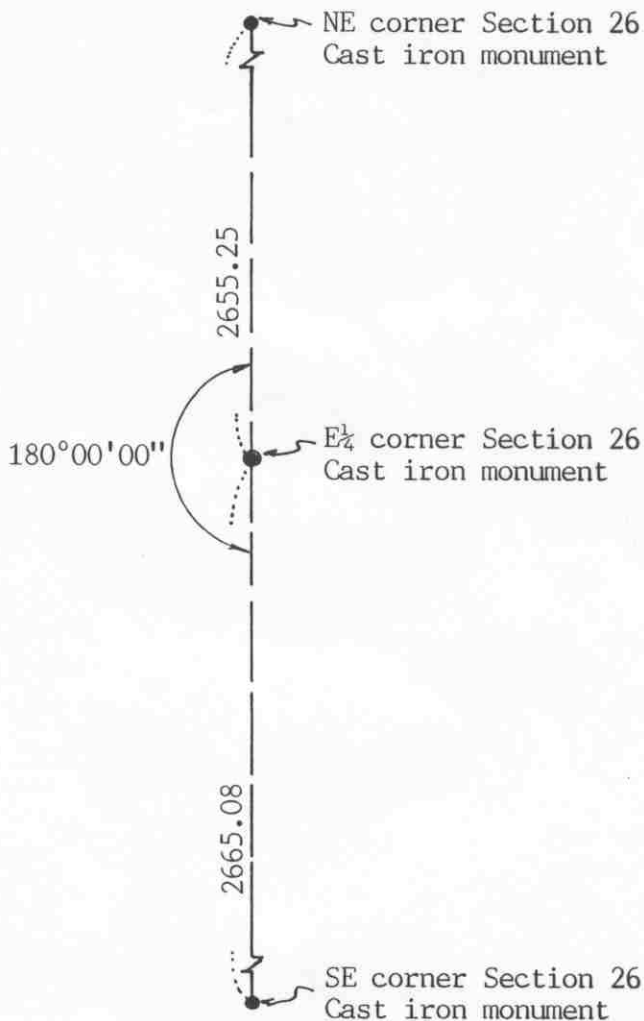
For additional information, contact the Mn/DOT Surveys Section at Willmar, Mn 56201.

# Certificate of Location of Government Corner



SKETCH OF REFERENCE TIES  
(NO SCALE)

SECTION 26



SECTION 25

Statement of evidence relative to this corner location on sheet 2

I hereby certify that this document was prepared by me or under my direct supervision.

Willard Pellinen  
Willard Pellinen  
McLeod County Surveyor  
License No. 9626

Date August 5, 1991

OFFICE OF THE COUNTY RECORDER  
MCLEOD COUNTY, MINNESOTA.

I hereby certify that this document was filed in this office at 9 o'clock A.M. on the 26th day of Aug, 1991.

Garmon Ostlie, County Recorder  
By \_\_\_\_\_, Deputy

Document No. 240541



EAST QUARTER corner, Section 26, Township 116 North, Range 30 West

## Certificate of Location of Government Corner

August, 1855. The Public Land Survey was completed by Thomas Simpson of the General Land Office. He set a post in mound with trench, pits, charred stake and he planted osage orange seeds at the northeast and southwest corners of the mound.

June 10, 1974. McCombs Knutson Associates (Dickman Knutson, county surveyor) talked with Elmer Peterson, 72 years old, who has lived in the Northeast Quarter of Section 26 all his life. He said the fence running east-west should be the quarter line. Has been accepted as the line by the adjoining owners.

March 7, 1974. Knutson set an iron pipe along the east-west fence on a straight line between the section corners. There is no occupation line running north-south, same owners on each side of line.

February 5, 1984. The east-west fence has been removed and the iron pipe set by Knutson is gone. We set 2  $\frac{1}{2}$  inch by 14 inch iron pipes, one on top of the other, on line between the section corners using the 1974 distances by Knutson from the northeast and southeast corners of the section. No distance ties available. We took a few angle ties.

May 14, 1984. We set a McLeod County cast iron monument down  $1\frac{1}{2}$  feet below the surface with  $\frac{1}{2}$  inch by 14 inch iron pipes below and above the monument.

We accept the corner as set by Knutson as marking the correct quarter corner of the section. It was along a long standing occupation line (the east-west fence) and is within 5 feet of being on a split between the section corners.

# CERTIFICATE OF LOCATION OF GOVERNMENT CORNER

Northeast Corner of Section 26, Township 116 N, Range 30 W, 5th P.M.

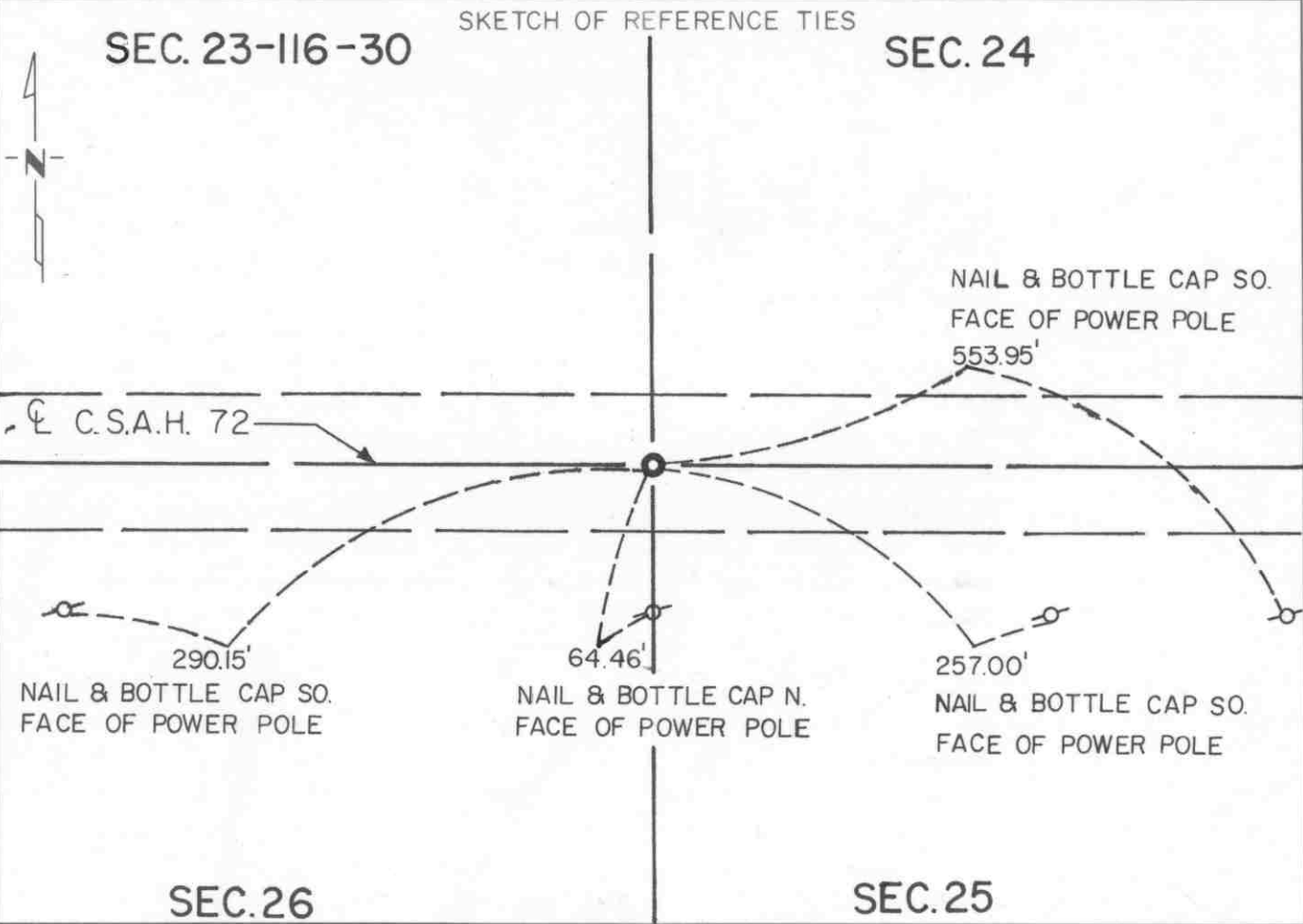
STATE OF MINNESOTA, County of McLeod

At the corner location shown on the sketch:

On Apr. 16, 1990 found a cast iron monument near the road surface  
DATE

left monument as found,  lowered monument,  removed monument (explain)

On \_\_\_\_\_ placed a \_\_\_\_\_  
DATE



Statement of evidence relative to this corner location is on back of page.

I hereby certify that this document and the data contained herein was prepared by me or under my direct supervision.

Robert Jones 8-20-91  
SIGNATURE DATE

Registration No. 11864

- Land Surveyor,  Professional Engineer  
 County Surveyor,  County Engineer

OFFICE OF THE COUNTY RECORDER

County of McLeod

I hereby certify that this document was filed in the Co. Recorders office at 2 P .M. on the 18th day of Sep A.D. 19 91

County Recorder Carmen Ostlie

By \_\_\_\_\_, Deputy

DOCUMENT NO. 241066

Statement of Evidence:

Northeast Corner Section 26, T 116 N, R 30 W

- 1855 - The original Public Land Survey was completed by Thomas Simpson. A wood post was set over a charred stake in a dirt mound to mark the corner. Trenches and pits were dug to build the mound. Osage orange was planted at the corners of the mound.
- 1970 - Dickman Knutson, McLeod County Surveyor, found an iron pin 1.5 feet below the road surface. Distances were measured to the north quarter corner of Section 26 and to the north quarter corner of Section 25 and they were 2647.89 feet and 2649.90 feet respectively. The McLeod County Highway Department measured the same distances in 1948 and they were 2647.95 feet and 2650.00 feet respectively.
- 1974 - Dickman Knutson set a McLeod County cast iron monument over the iron pin and set reference ties.
- 1989 - Willard Pellinen, McLeod County Surveyor, recovered the cast iron monument and all the reference ties.
- 1990 - R. C. Jones, Registered Land Surveyor with Mn/DOT, found the cast iron monument near the road surface and recovered all the reference ties.

The cast iron monument is accepted as the corner location because it is at the centerline of an east/west road, which has existed for many years, it is at distances from the quarter corners east and west that one would reasonably expect to encounter in the interior of a township, the distance to the north quarter corner of Section 25 was found to be 2649.96, which agrees with previous surveys, and there are no property lines running north or south of this corner.

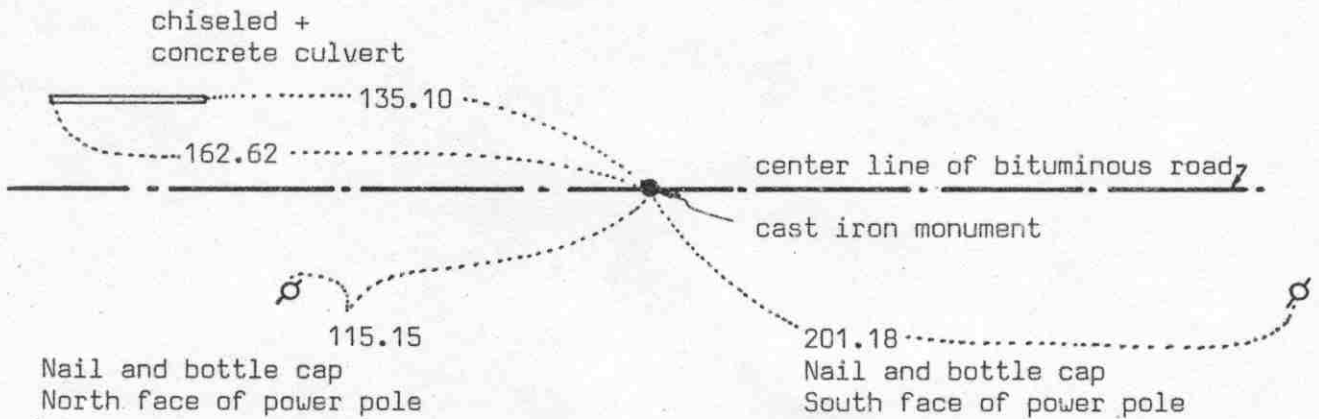
For additional information, contact the Mn/DOT Surveys Section at Willmar, Mn 56201.

# Certificate of Location of Government Corner



SKETCH OF REFERENCE TIES  
(NO SCALE)

SECTION 23



SECTION 26

Statement of evidence relative to this corner location on sheet 2

I hereby certify that this document was prepared by me or under my direct supervision.

Willard Pellinen  
Willard Pellinen  
McLeod County Surveyor  
License No. 9626  
Date 2/3/90

OFFICE OF THE COUNTY RECORDER  
MCLEOD COUNTY, MINNESOTA.

I hereby certify that this document was filed in this office at 3 o'clock P.M. on the 27th day of Feb, 1990.

Carmen Pottier, County Recorder  
By \_\_\_\_\_, Deputy  
Document No. 232092

NORTH QUARTER corner, Section 26, Township 116 North, Range 30 West

## Certificate of Location of Government Corner

This corner was set in 1855 by Thomas Simpson of the General Land Office. He "set quarter section post in mound with trench and pits, charred stake and osage orange seeds northeast and southwest."

May, 1970. We found an iron pin down  $1\frac{1}{2}$  feet below the road surface. No property lines north or south of this corner. We had a distance of 2651.40 feet to the northwest corner of Section 26, compared with a distance of 2651.50 feet by the County Highway Department in 1948. We had a distance of 2647.89 feet to the northeast corner of Section 26 compared with a distance of 2647.95 by the highway department in 1948.

August 5, 1974. We set a McLeod County cast iron monument at the corner and took reference ties.

March 1, 1989. We found the cast iron monument in good condition and the reference ties good.

The found iron pin was probably set by the county highway department. There being no evidence to the contrary, we accept this location as the correct quarter corner.

# Certificate of Location of Government Corner

## SKETCH OF REFERENCE TIES

(NO SCALE)



SECTION 27

SECTION 26

Field line

2444.44 to NE corner of Sec. 27

215.45 feet to computed E 1/4 cor. (in lake)

Nail and bottle cap  
North face of 12  
inch tree, up 2 feet

54.92

Cast iron monument

22.32 Nail and bottle cap  
west face of 32 inch ash,  
up 4 feet

Nail and bottle cap  
NW face of 18 inch  
tree, up 3 feet

43.38

Fence



Statement of evidence relative to this corner location on sheet 2

I hereby certify that this document was prepared by me or under my direct supervision.

Willard Pellinen

Willard Pellinen  
McLeod County Surveyor  
License No. 9626

Date Jan. 30, 1995

OFFICE OF THE COUNTY RECORDER  
MCLEOD COUNTY, MINNESOTA.

I hereby certify that this document was filed in this office at 9 o'clock A.M. on the 6th day of February, 19 95.

Armen Otis Muder, County Recorder

By \_\_\_\_\_, Deputy

Document No. 264039

## Certificate of Location of Government Corner

August, 1855. This corner was originally established by the General Land Office. Thomas Simpson set a post and marked a 15 inch and an 18 inch oak for bearing trees.

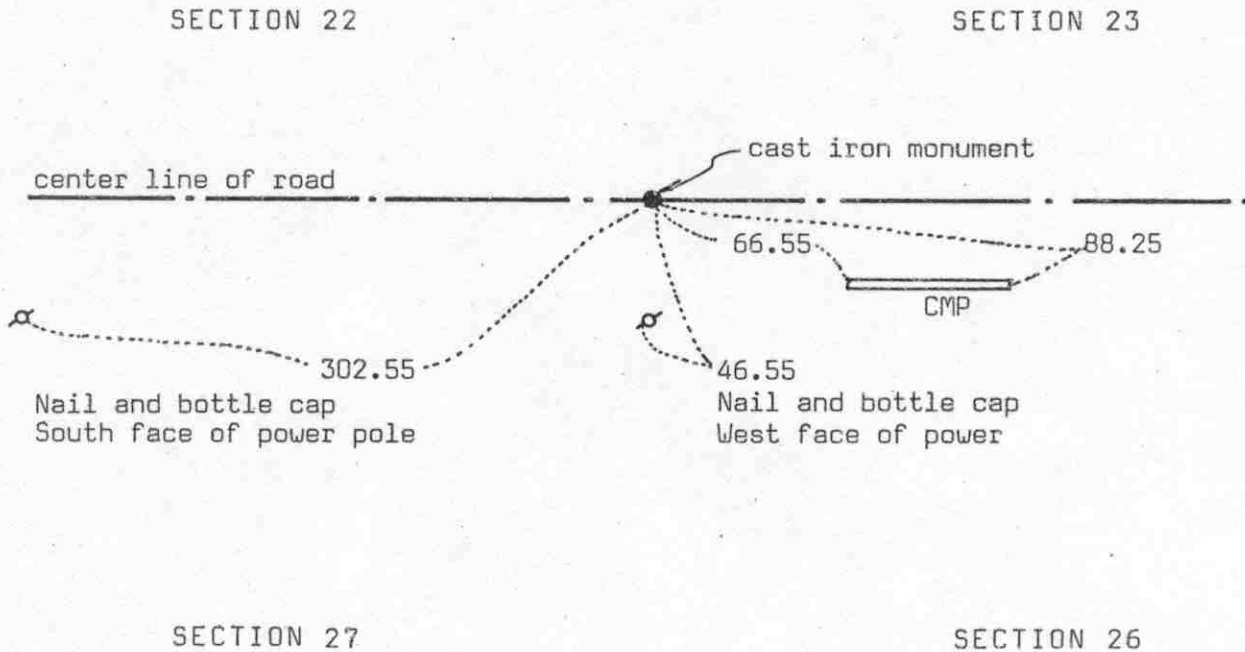
April 2, 1985. We set a  $\frac{1}{2}$  inch diameter iron pipe on the southerly extension of a fence and field line at a proration of Government distances between the northeast corner of Section 27 and the east quarter corner (computed location) which is in the lake. We took available reference ties.

*July 16, 1985. We set a McLeod County cast iron monument in place of the 1/2 inch iron pipe.*

# Certificate of Location of Government Corner



SKETCH OF REFERENCE TIES  
(NO SCALE)



Statement of evidence relative to this corner location on sheet 2

I hereby certify that this document was prepared by me or under my direct supervision.

Willard Pellinen

Willard Pellinen  
McLeod County Surveyor  
License No. 9626

Date 1/13/90

OFFICE OF THE COUNTY RECORDER  
MCLEOD COUNTY, MINNESOTA.

I hereby certify that this document was filed in this office at 2 o'clock P.M. on the 8th day of February, 1990.

Carmen Ostlie, County Recorder  
By \_\_\_\_\_, Deputy

Document No. 231869



NORTHEAST            corner, Section 27, Township 116 North, Range 30 West

## Certificate of Location of Government Corner

This corner was originally set by Thomas Simpson of the General Land Office in 1855. He "set post, corner to Sections 22, 23, 26 and 27. Erected mound with trench and pits, charred stake and osage orange seeds at each angle."

1948. County Highway Department field notes show they found a wood stake at the corner.

1968. E.K.Rychner of the Conservation Department set a spike at the corner.

May, 1970. We found a spike at the corner and an iron pin down  $1\frac{1}{2}$  feet below the spike. Our distance to the north quarter corner of Section 26 is within 0.1 foot of highway department distance.

August 5, 1974. We set a McLeod County cast iron monument at the corner and took reference ties.

March 1, 1989. We found the monument in good condition and the reference ties good.

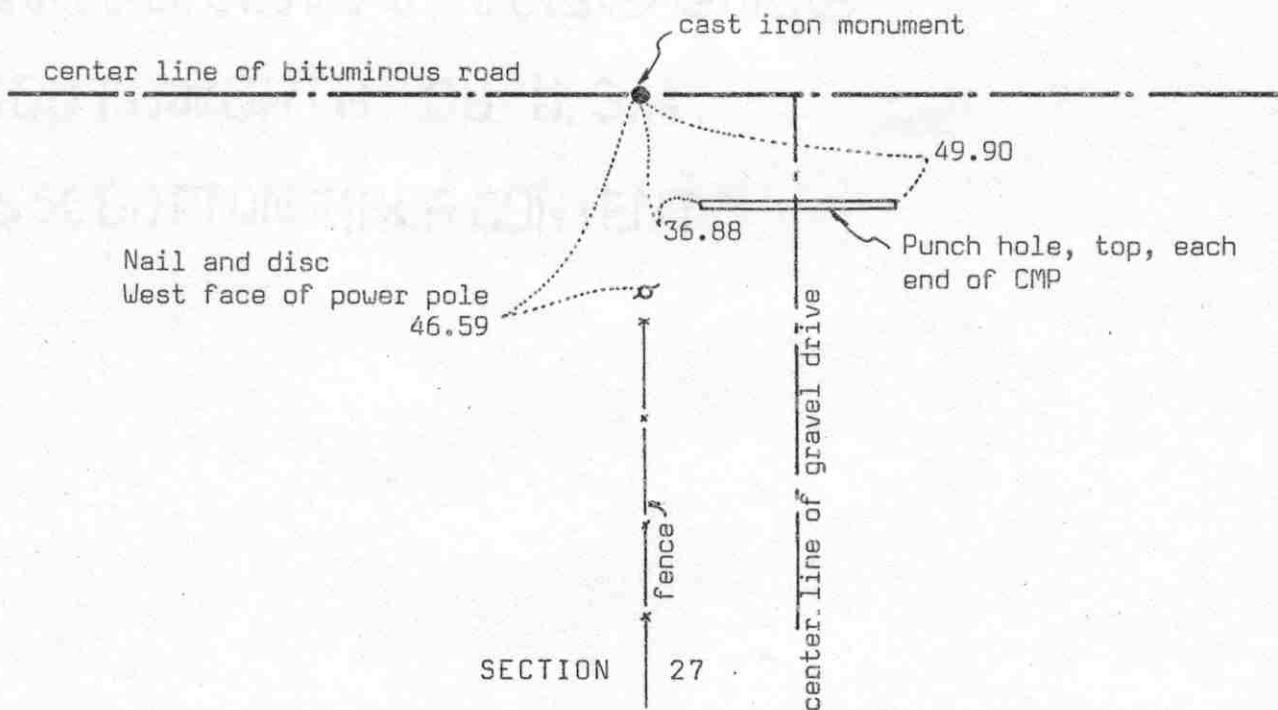
There being no evidence to the contrary, we accept the iron pin we found as having marked the correct location of the section corner.

# Certificate of Location of Government Corner



SKETCH OF REFERENCE TIES  
(NO SCALE)

SECTION 22



Statement of evidence relative to this corner location on sheet 2

I hereby certify that this document was prepared by me or under my direct supervision.

Willard Pellinen  
Willard Pellinen  
McLeod County Surveyor  
License No. 9626

Date 1/13/90

OFFICE OF THE COUNTY RECORDER  
MCLEOD COUNTY, MINNESOTA.

I hereby certify that this document was filed in this office at 2 o'clock P.M. on the 8th day of February, 1990.

Carmina Postlie, County Recorder  
By \_\_\_\_\_, Deputy

Document No. 231870

NORTH QUARTER            corner, Section 27, Township 116 North, Range 30 West

## Certificate of Location of Government Corner

This corner was set in 1855 by Thomas Simpson of the General Land Office. He "set quarter section post in mound with trench and pits, charred stake and osage orange seeds northeast and southwest."

October, 1948. The county highway department dug for the corner and found nothing. They assumed the quarter corner on the center line of the road.

August 5, 1974. We set a McLeod County cast iron monument on the center line of the road in line with a fence to the south. Adjacent land owners agree the fence is on the north south quarter line of Section 27. The monument falls within 1 foot of being half way between section corners and about  $1\frac{1}{2}$  feet north of straight line between the section corners.

We accept the center line of the road and the fence line extended north as having perpetuated the correct location of the quarter corner.

### Certificate of Location of Government Corner

SKETCH OF REFERENCE TIES  
(NO SCALE)



Punch hole, top, each end of 15 inch cmp

263.55

231.84

fence

PK nail on west face of wood fence post  
103.43

cast iron monument

1/2 inch iron pipe in shoulder of road 13.50

47.03  
PK nail on south face of wood fence post

center line of gravel road

SECTION 28

SECTION 27

Statement of evidence relative to this corner location on sheet 2

I hereby certify that this document was prepared by me or under my direct supervision.

Willard Pellinen

Willard Pellinen  
McLeod County Surveyor  
License No. 9626

Date 4/5/90

OFFICE OF THE COUNTY RECORDER  
MCLEOD COUNTY, MINNESOTA.

I hereby certify that this document was filed in this office at 4 o'clock P.M. on the 2nd day of May, 1990.

Carmen Ostlie, County Recorder

By \_\_\_\_\_, Deputy

Document No. 233090

EAST QUARTER corner, Section 28, Township 116 North, Range 30 West

## *Certificate of Location of Government Corner*

1855. This corner was originally established by Thomas Simpson of the General Land Office. He set a post in a mound with trench, pits, charred stake and planted osage orange seeds northeast and southwest.

February 26, 1974. McCombs Knutson Associates, Dickman Knutson, county surveyor, measured the east line of Section 28 and set a temporary corner on the center line of a gravel road in line with a fence to the east. Marvin Rettman, 51 years old, in the Northeast Quarter of Section 27 since 1939 said this point has always been accepted as the correct corner. Knutson dug for the corner, found a large spike down 2 feet. Knutson set a cast iron monument at the location of the spike and took reference ties.

March 22, 1985. We measured the east line of Section 28 and had a distance of 2666.22 for the north half and 2648.55 feet for the south half.

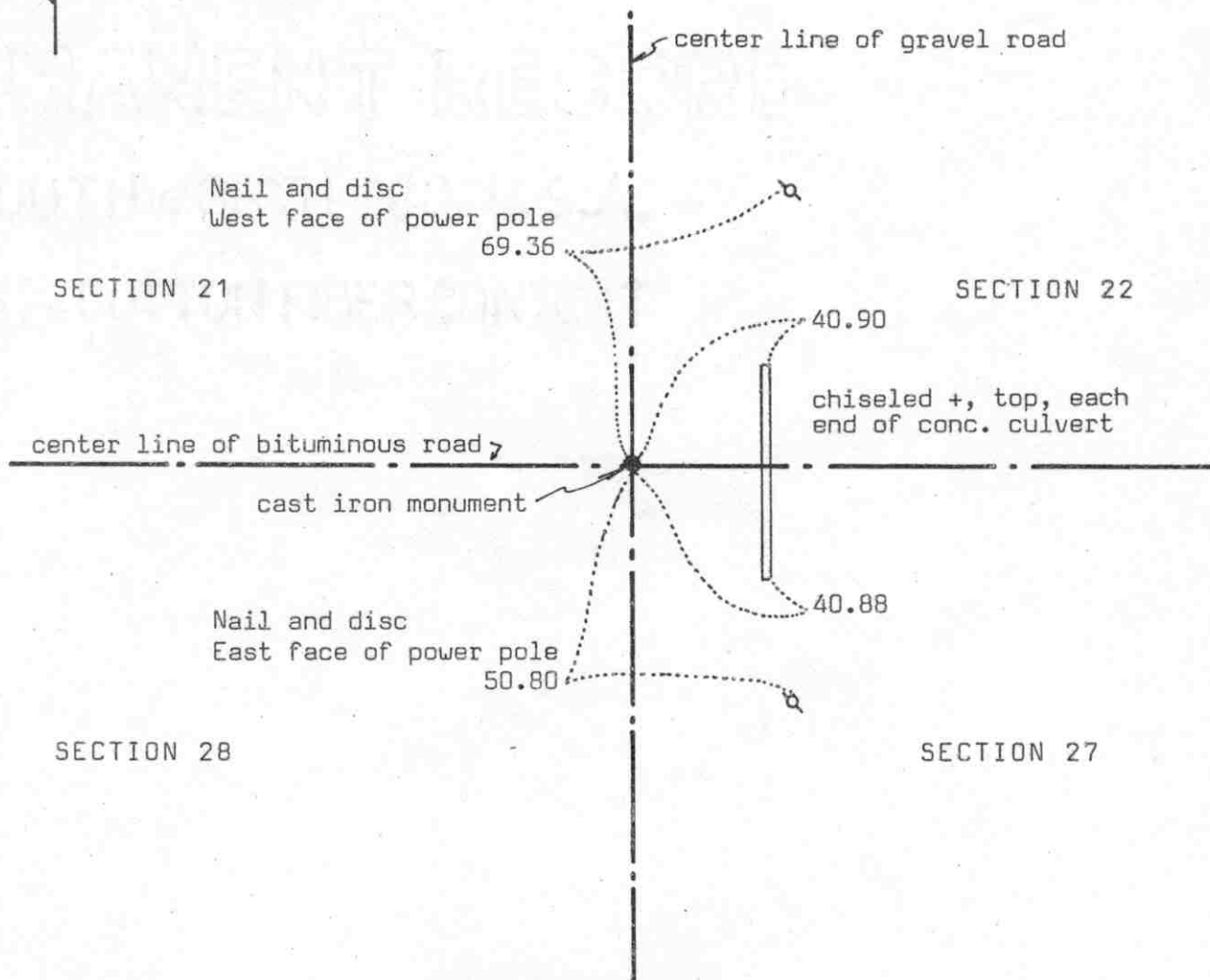
March 31, 1989. We found the cast iron monument in good condition, down 3 inches below the road surface. Only 2 old reference ties remained. We took additional ties.

There being no evidence to the contrary, we must accept the cast iron monument as marking the correct location of the quarter corner. This is on long standing occupation lines, the center line of the road and in line with the fence to the east.

# Certificate of Location of Government Corner



SKETCH OF REFERENCE TIES  
(NO SCALE)



Statement of evidence relative to this corner location on sheet 2

I hereby certify that this document was prepared by me or under my direct supervision.

Willard Pellinen  
 Willard Pellinen  
 McLeod County Surveyor  
 License No. 9626  
 Date 1/13/90

OFFICE OF THE COUNTY RECORDER  
 MCLEOD COUNTY, MINNESOTA.

I hereby certify that this document was filed in this office at 2 o'clock P.M. on the 8th day of February, 1990.

Carmen Postlie, County Recorder  
 By \_\_\_\_\_, Deputy  
 Document No. 231871

## Certificate of Location of Government Corner

This corner was originally set in 1855 by Thomas Simpson of the General Land Office. He "set post, corner to Sections 21, 22, 27 and 28. Erected mound with trench and pits, charred stake and planted osage orange seeds at each angle."

1948. McLeod County Highway Department found a rock and oak stake.

March 3, 1973. Carl Otto, 69 years old, has lived in East Half of Southeast Quarter of Section 21 all his life, said center line intersection of roads has been accepted by all adjoining land owners as the correct corner.

June 14, 1974. We dug and found a stone and rotted wood stake at the center line intersection of the roads. Tied off to spikes in the road .

August 5, 1974. We set a McLeod County cast iron monument and took reference ties.

March 1, 1989. We found the monument in good condition and the reference ties good.

We feel the stone we found was the same stone the highway department found in 1948 and that it had perpetuated the correct location of the section corner.



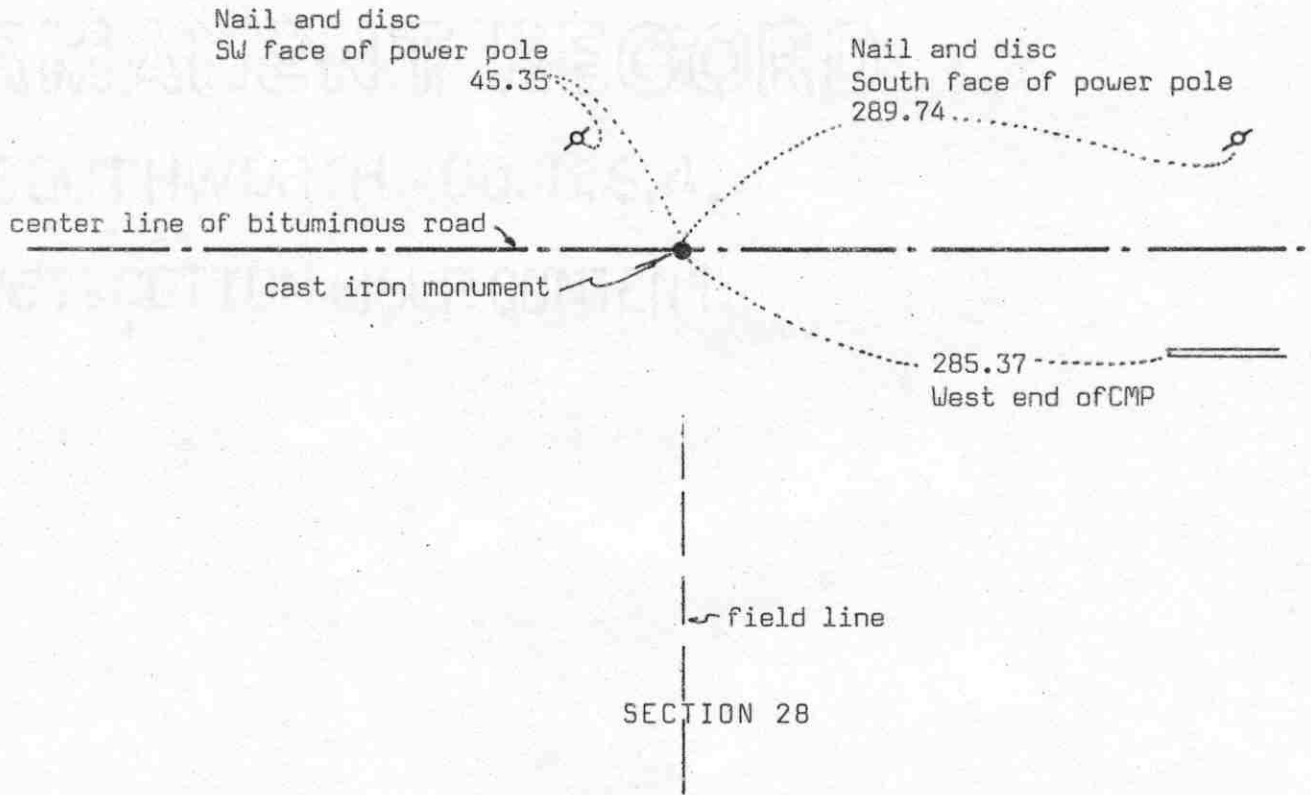
# Certificate of Location of Government Corner



## SKETCH OF REFERENCE TIES

(NO SCALE)

SECTION 21



Statement of evidence relative to this corner location on sheet 2

I hereby certify that this document was prepared by me or under my direct supervision.

Willard Pellinen

Willard Pellinen  
McLeod County Surveyor  
License No. 9626

Date 1/13/90

OFFICE OF THE COUNTY RECORDER  
MCLEOD COUNTY, MINNESOTA.

I hereby certify that this document was filed in this office at 2 o'clock P.M. on the 8th day of February, 1990.

Carmin Ostlie, County Recorder

By \_\_\_\_\_, Deputy

Document No. 231872



NORTH QUARTER corner, Section 28, Township 116 North, Range 30 West

## Certificate of Location of Government Corner

This corner was originally set in 1855 by Thomas Simpson of the General Land Office. He "set quarter section post in mound with trench and pits, charred stake and osage orange seeds northeast and southwest.

1948. The county highway department dug for the corner but found nothing.

March 27, 1973. We measured the north line of Section 28 and set a temporary quarter corner on the center line of the road in line with a field line to the south.

May 3, 1973. Mr. Edward Otto, 68 years old, lived in the Northeast Quarter of Section 28 and in the South Half of Section 21 all his life, said field line running south has been in the same location as long as he can remember and has been accepted as the north south quarter line of Section 28. He said he has never seen the corner and never heard of any one else knowing about it. Mr. Donald Otto, 43 years old, in North Half of Northwest Quarter of Section 28 all his life, agrees. Mr. Carl Otto, 69 years old, lived in or near Section 21 all his life, also agrees.

August 7, 1974. We set a McLeod County cast iron monument in the center line of the road in line with the field line to the south and took reference ties.

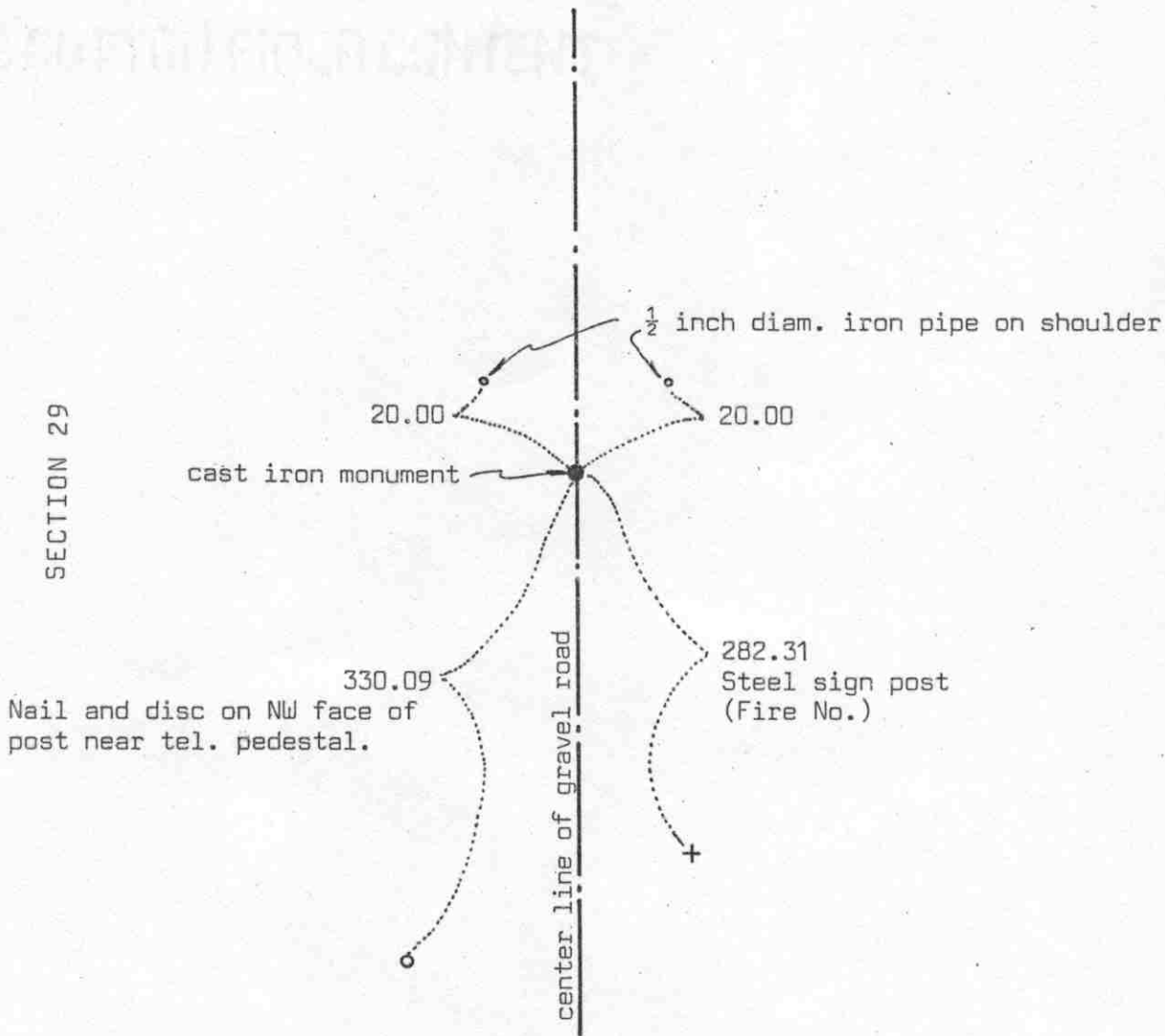
March 1, 1989. We found the monument in good condition and the reference ties ok.

There being no evidence to the contrary, we accept the center line of the road and the field line as having perpetuated the correct location of the quarter corner.

# Certificate of Location of Government Corner



SKETCH OF REFERENCE TIES  
(NO SCALE)



Statement of evidence relative to this corner location on sheet 2

I hereby certify that this document was prepared by me or under my direct supervision.

Willard Pellinen

Willard Pellinen  
McLeod County Surveyor  
License No. 9626

Date 3/11/90

OFFICE OF THE COUNTY RECORDER  
MCLEOD COUNTY, MINNESOTA.

I hereby certify that this document was filed in this office at 4 o'clock P.M. on the 19th day of March, 1990.

Carmen Ostlie, County Recorder

By \_\_\_\_\_, Deputy

Document No. 232392

EAST QUARTER corner, Section 29, Township 116 North, Range 30 West

## Certificate of Location of Government Corner

This corner was originally set in 1855 by Thomas Simpson of the General Land Office. He "set quarter section post in mound with trench, pits, charred stake and planted osage orange seeds northeast and southwest."

January 3, 1979. We measured the east line of Section 29 and set a temporary quarter corner half way between the section corners. No occupation or property lines to help locate the corner and no available testimony concerning the corner.

August, 1979. We dug for the corner, John Tupa from Hutchinson with a backhoe. Found nothing.

April 8, 1980. We set a  $\frac{1}{2}$  inch diameter iron pipe at the corner using single proportionate measure.

July 9, 1980. We replaced the iron pipe with a McLeod County cast iron monument and took reference ties.

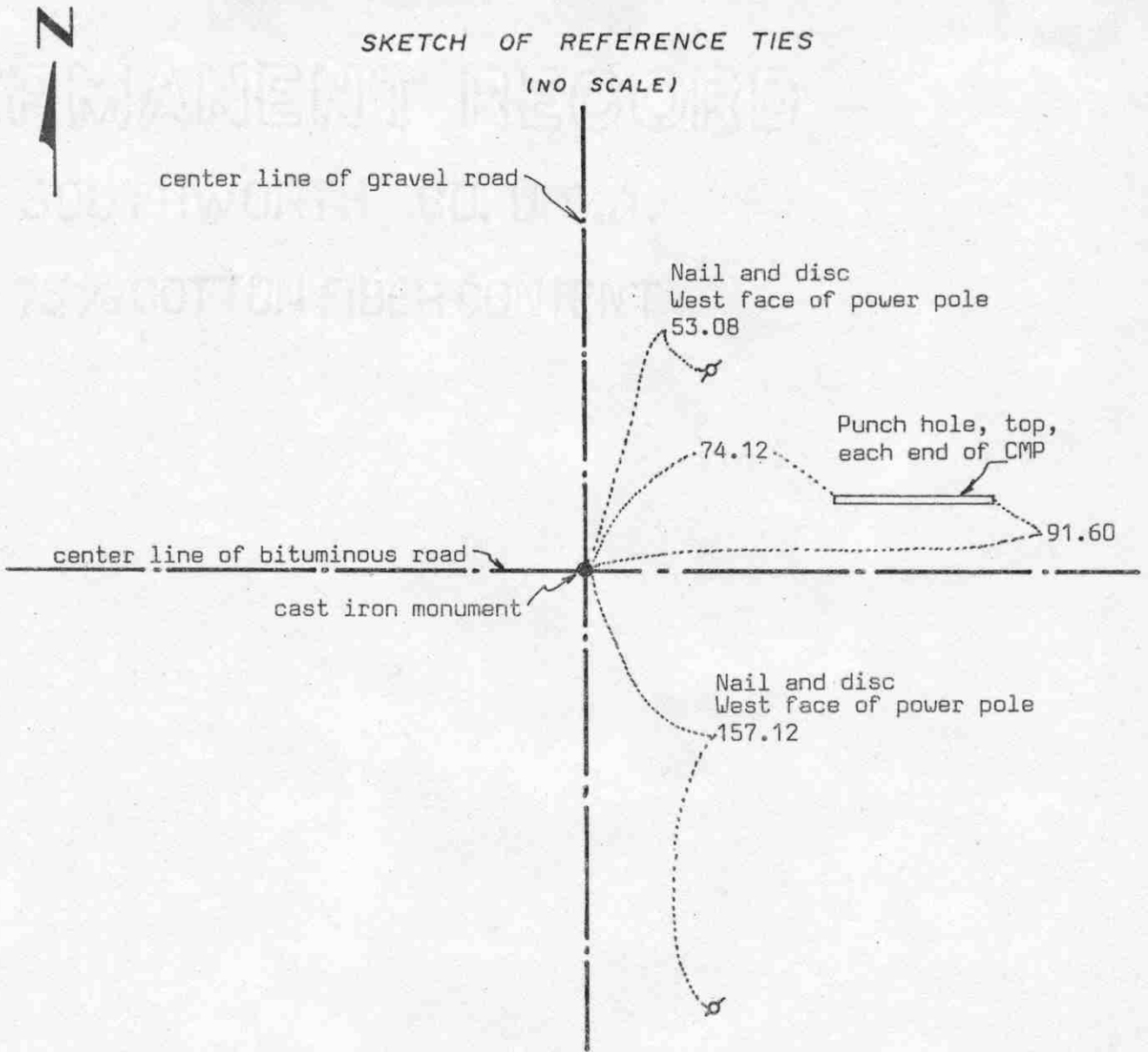
March 7, 1989. We found the monument in good condition and the reference ties good.

We feel this corner was lost so we used lost methods to set it. The corner falls on the center line of the north-south road.

# Certificate of Location of Government Corner

## SKETCH OF REFERENCE TIES

(NO SCALE)



Statement of evidence relative to this corner location on sheet 2

I hereby certify that this document was prepared by me or under my direct supervision.

Willard Pellinen

Willard Pellinen  
McLeod County Surveyor  
License No. 9626

Date 1/7/90

OFFICE OF THE COUNTY RECORDER  
MCLEOD COUNTY, MINNESOTA.

I hereby certify that this document was filed in this office at 2 o'clock P..M. on the 8th day of February, 1990.

Carmen Ostlie, County Recorder

By \_\_\_\_\_, Deputy

Document No. 231873

NORTHEAST

corner, Section 29, Township 116 North, Range 30 West

## Certificate of Location of Government Corner

This corner was originally set in 1855 by Thomas Simpson of the General Land Office. He "set post, corner to Sections 20, 21, 28 and 29, erected mound with trench and pits, charred stake and osage orange seeds at each angle.

1948. The County Highway Department dug for the corner but found nothing. Mr. Ewald, 76 years old at that time, told the highway department that no corner had ever been found.

August 7, 1974. We set a McLeod County cast iron monument at the center line intersection of the roads. The adjoining property owners and the highway department have accepted this location as the correct corner. We took available reference ties.

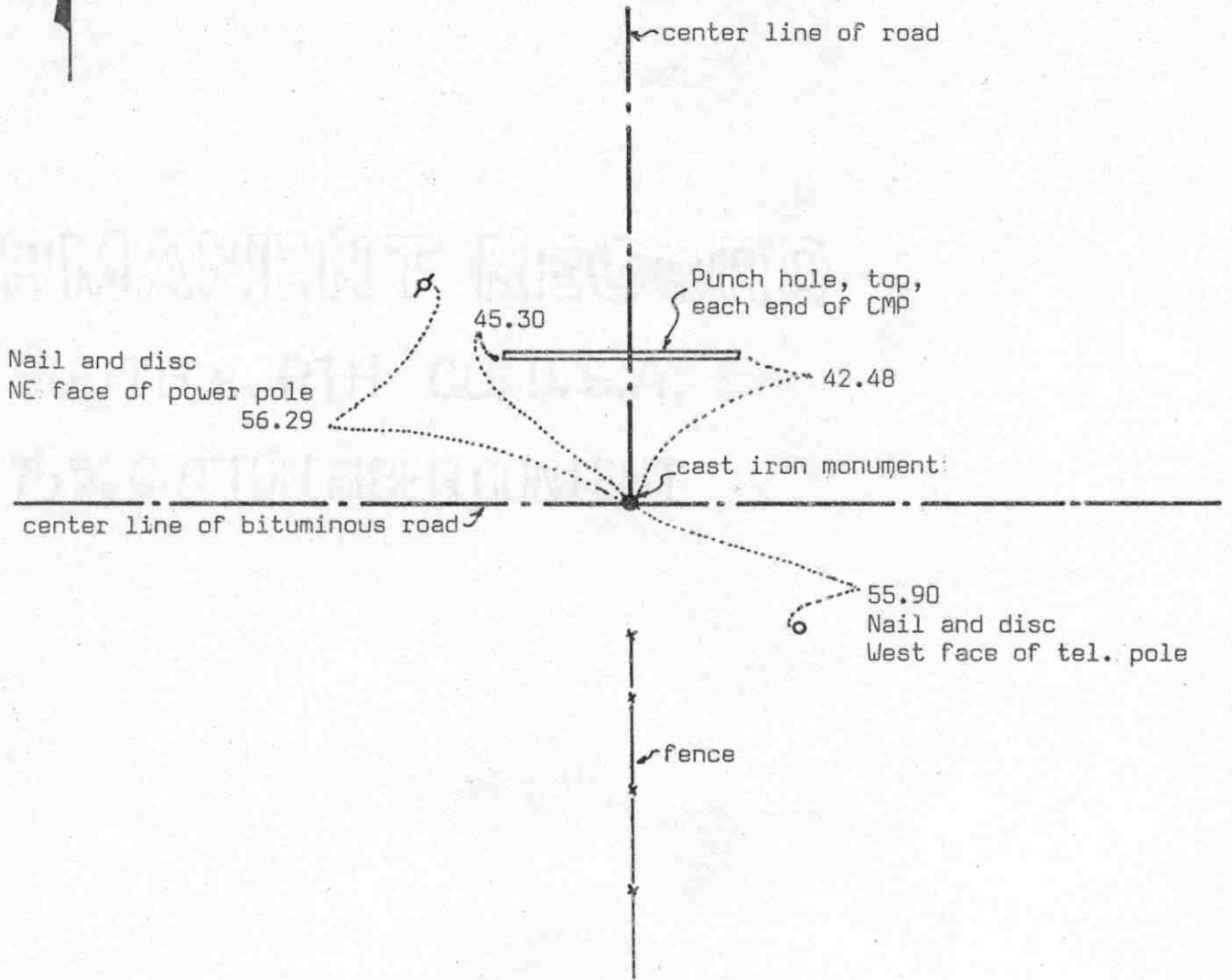
March 1, 1989. We found the cast iron monument in good condition and all except one reference tie still ok.

There being no evidence to the contrary, we accept the center line intersection as having perpetuated the correct location of the section corner.

# Certificate of Location of Government Corner



SKETCH OF REFERENCE TIES  
(NO SCALE)



Statement of evidence relative to this corner location on sheet 2

I hereby certify that this document was prepared by me or under my direct supervision.

Willard Pellinen  
Willard Pellinen  
McLeod County Surveyor  
License No. 9626  
Date 1/7/90

OFFICE OF THE COUNTY RECORDER  
MCLEOD COUNTY, MINNESOTA.

I hereby certify that this document was filed in this office at 2 o'clock P.M. on the 8th day of February, 1990.

Carmen Postle, County Recorder  
By \_\_\_\_\_, Deputy  
Document No. 231874

NORTH QUARTER corner, Section 29, Township 116 North, Range 30 West

## Certificate of Location of Government Corner

This corner was originally set by the government in 1855. Thomas Simpson set post in mound with trench, pits, charred stake and osage orange seeds at northeast and southwest corners of mound.

1948. County Highway Department notes show that no corner was found, corner taken out. They assumed the quarter corner to be at the center line intersection of the roads.

August 7, 1974. We set a McLeod County cast iron monument at the center line intersection of the roads. Our distances east and west agree with the highway department distances.

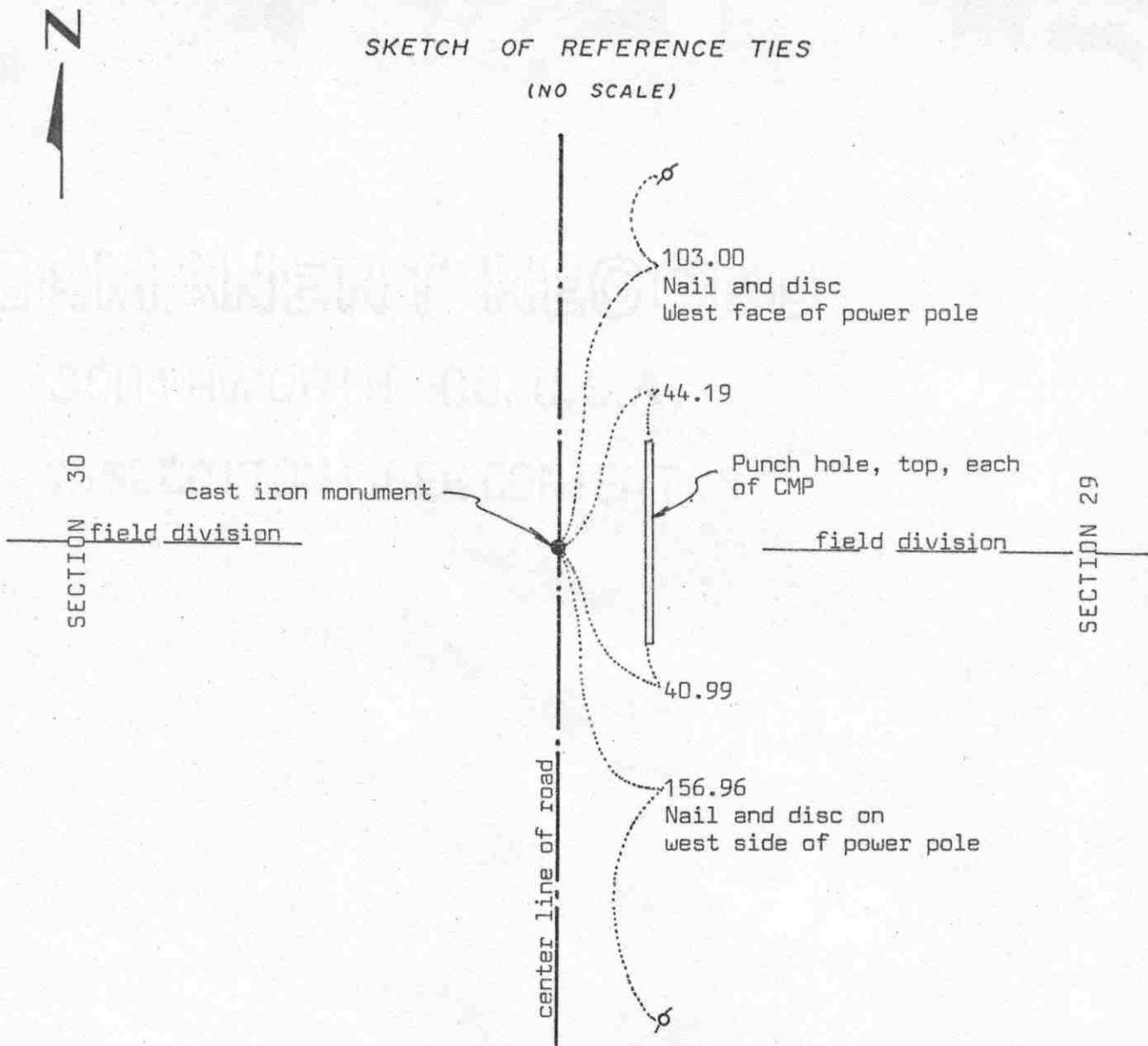
We feel this was an obliterated corner whose location has been perpetuated by the center line intersection of the roads. Adjacent property owners don't know of the corner but have always assumed the center line of the roads are along the section lines.



# Certificate of Location of Government Corner

SKETCH OF REFERENCE TIES

(NO SCALE)



Statement of evidence relative to this corner location on sheet 2

I hereby certify that this document was prepared by me or under my direct supervision.

Willard Pellinen

Willard Pellinen  
McLeod County Surveyor  
License No. 9626

Date 3/11/90

OFFICE OF THE COUNTY RECORDER  
MCLEOD COUNTY, MINNESOTA.

I hereby certify that this document was filed in this office at 4 o'clock P.M. on the 19th day of March, 1990.

Carmen Stlie, County Recorder

By \_\_\_\_\_, Deputy

Document No. 232393



## Certificate of Location of Government Corner

This corner was originally set by the General Land Office in 1855. Thomas Simpson "set quarter section post in mound with trench, pits, charred stake and osage orange seeds northeast and southwest."

October, 1939. E.L.Higgins, county surveyor, shows this corner to be half way between section corners.

December 28, 1978. We measured the east line of Section 30 and set a temporary quarter corner approximately half way between the section corners.

August 29, 1979. We dug for the corner, John Tupa from Hutchinson with a back hoe. We dug a hole 12 feet long 8 feet wide and 4 feet deep at our temporary corner, but found nothing.

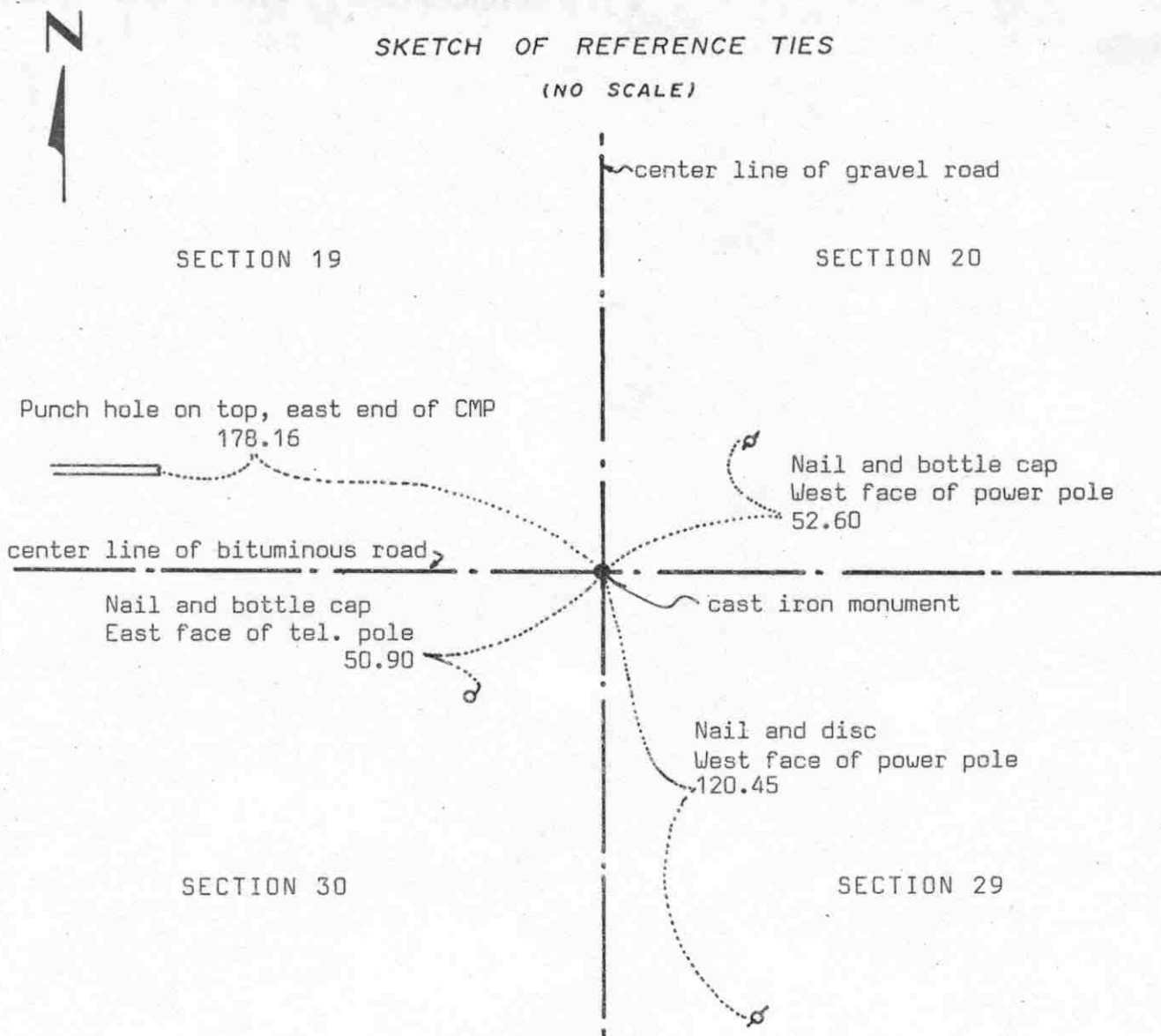
August 30, 1979. We set a McLeod County cast iron monument by single proportionate measure. This falls on the center line of the road and in line with field divisions east and west. We took reference ties.

March 7, 1989. We found the monument in good condition and the reference ties good.

We believe this is the correct location of the quarter corner. We set it by lost methods, but it also falls on the center line of the road and in line with the field lines.

# Certificate of Location of Government Corner

SKETCH OF REFERENCE TIES  
(NO SCALE)



Statement of evidence relative to this corner location on sheet 2

I hereby certify that this document was prepared by me or under my direct supervision.

Willard Pellinen  
Willard Pellinen  
McLeod County Surveyor  
License No. 9626

Date 1/7/90

OFFICE OF THE COUNTY RECORDER  
MCLEOD COUNTY, MINNESOTA.

I hereby certify that this document was filed in this office at 2 o'clock P.M. on the 8th day of February, 1990.

Carmin Ostlie, County Recorder  
By \_\_\_\_\_, Deputy

Document No. 231875

NORTHEAST corner, Section 30, Township 116 North, Range 30 West

## Certificate of Location of Government Corner

This corner was established in 1855 by the Government Land Office. Thomas Simpson "set post, corner to Sections 19, 20, 29 and 30. Erected mound with trench, pits, charred stake and osage orange seeds at each angle."

October, 1939, E.L.Higgins, county surveyor, found a stone at this corner.

October, 1948. The county highway department found a pointed stone at center line intersection of roads.

March 27, 1973. We found a spike at the corner at the center line intersection of the roads.

May, 1973. We dug below the found spike and found a stone, pointed at the top and below the stone we found a rotted wood stake. We took available reference ties.

On August 7, 1974, we set a McLeod County cast iron monument.

March 1, 1989. We found the monument in good condition and all but one reference tie still ok.

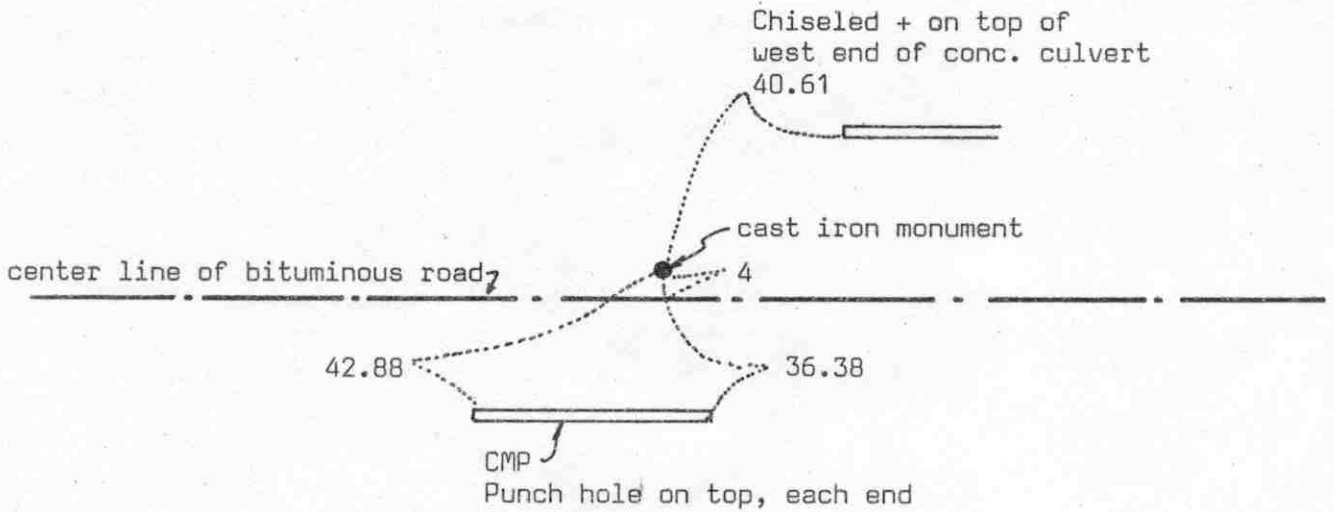
We believe the stone we found is the same stone found by the highway department in 1948 and the same stone found by Higgins in 1939, and that it has perpetuated the correct location of the section corner.

# Certificate of Location of Government Corner



## SKETCH OF REFERENCE TIES

(NO SCALE)



Statement of evidence relative to this corner location on sheet 2

I hereby certify that this document was prepared by me or under my direct supervision.

Willard Pellinen

Willard Pellinen  
McLeod County Surveyor  
License No. 9626

Date 11/7/90

OFFICE OF THE COUNTY RECORDER  
MCLEOD COUNTY, MINNESOTA.

I hereby certify that this document was filed in this office at 2 o'clock P.M. on the 8th day of February, 1990.

Carmen Ostlie, County Recorder

By \_\_\_\_\_, Deputy

Document No. 231876

NORTH QUARTER corner, Section 30, Township 116 North, Range 30 West

## Certificate of Location of Government Corner

1855. This corner was established by Thomas Simpson of the General Land Office. He "set quarter section post in mound with trench and pits, charred stake and osage orange seeds at northeast and southwest corners of mound."

October, 1939. E.L.Higgins, county surveyor, set the corner on a proration of government distances from the section corners. He set the corner on straight line between the section corners. He set a car axle at the corner.

June 20, 1941. Lew Merrill, surveyor, checked Higgins' distances but could not find the car axle at the quarter corner.

March 4, 1975. We measured the north line of Section 30 and set a spike on a proration of the government distances from the section corners. We set the spike on the center line of the road, about 4 feet south of a straight line.

September 4, 1975. We set a McLeod County cast iron monument on a straight line between the section corners on a proration of the government distances, and took reference ties. Our distances to each section corner is within 0.8 foot of 1939 distances by Higgins.

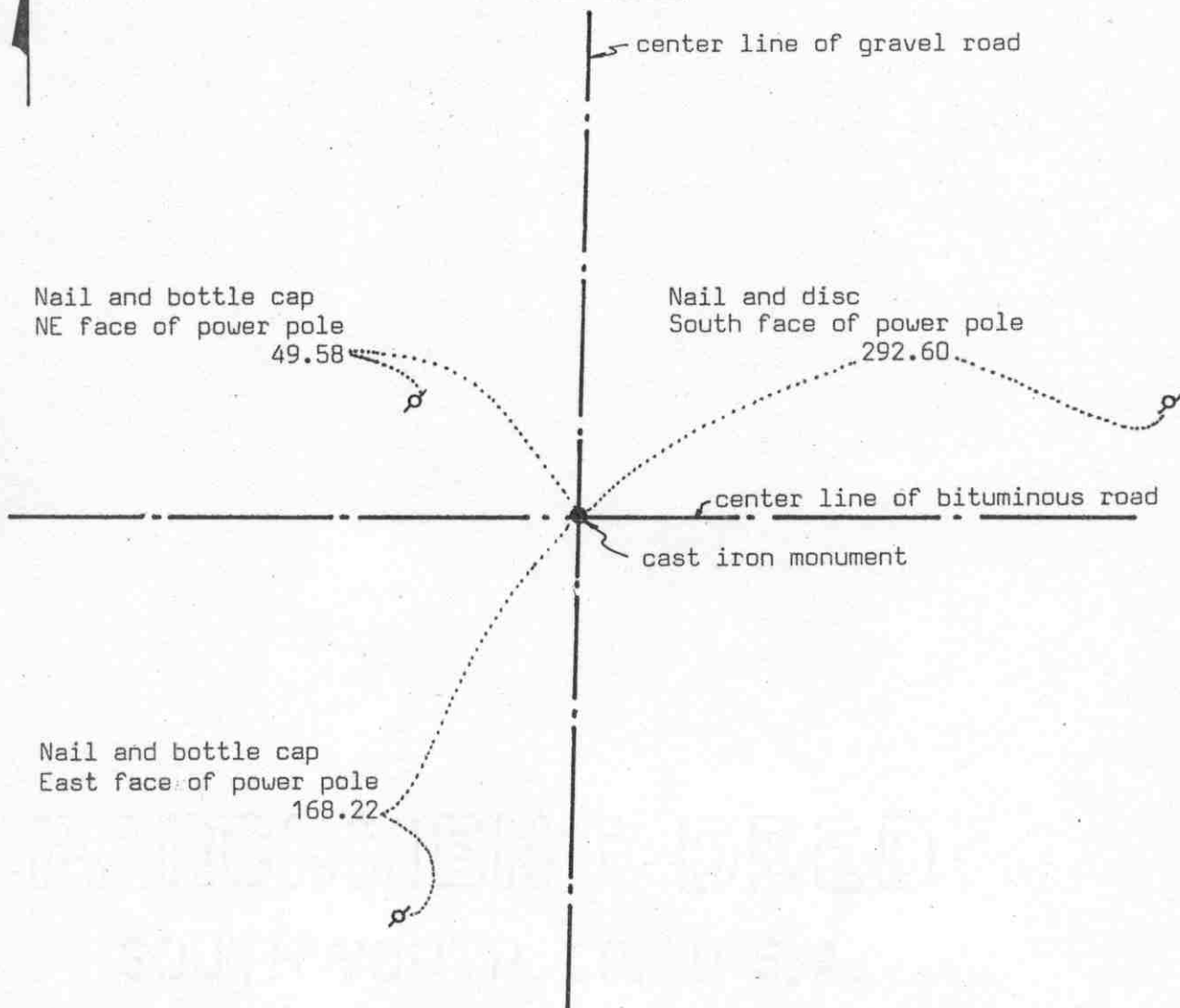
March 1, 1989. We found the monument in good condition and all but 1 of the reference ties still ok.

# Certificate of Location of Government Corner



## SKETCH OF REFERENCE TIES

(NO SCALE)



Statement of evidence relative to this corner location on sheet 2

I hereby certify that this document was prepared by me or under my direct supervision.

Willard Pellinen

Willard Pellinen  
McLeod County Surveyor  
License No. 9626

Date 1/6/90

OFFICE OF THE COUNTY RECORDER  
MCLEOD COUNTY, MINNESOTA.

I hereby certify that this document was filed in this office at 2 o'clock P.M. on the 8th day of February, 1990.

Carmen Ostlie, County Recorder

By \_\_\_\_\_, Deputy

Document No. 231877

## Certificate of Location of Government Corner

This corner was established in 1855 by the General Land Office. John Ryan "set post, corner to sections 19, 24, 25 and 30, deposited charcoal, dug pits and trench, built mound and planted osage orange seeds at corners of the mound."

October, 1948. The McLeod Highway Department dug and found a stone 12 inches below the road surface.

March 27, 1973. We found a T-bar down 1 foot below the surface. Took reference ties.

August 1974. We dug below the T-bar and found a stone directly below it. We set a McLeod County cast iron monument.

March 1, 1989. We found the cast iron monument down 6 inches in good condition. Only 1 reference tie remaining, took additional ties.

We believe the stone we found was the same stone found by the Highway Department in 1948 and that it had perpetuated the correct location of the section corner.

# Certificate of Location of Government Corner



SKETCH OF REFERENCE TIES  
(NO SCALE)

SECTION 25

SECTION 30

Nail and bottle cap  
East face of power pole  
103.66

24.21

25.82

fence

$\frac{1}{2}$  inch iron pipe in shoulder

center line of gravel road

Statement of evidence relative to this corner location on sheet 2

I hereby certify that this document was prepared by me or under my direct supervision.

Willard Pellinen

Willard Pellinen  
McLeod County Surveyor  
License No. 9626

Date 3/12/90

OFFICE OF THE COUNTY RECORDER  
MCLEOD COUNTY, MINNESOTA.

I hereby certify that this document was filed in this office at 4 o'clock P.M. on the 19th day of March, 1990.

Armen Ostlie, County Recorder

By \_\_\_\_\_, Deputy

Document No. 232394



WEST QUARTER \_\_\_\_\_ corner, Section 30, Township 116 North, Range 30 West

## Certificate of Location of Government Corner

This corner was originally set by the General Land Office in 1855. John Ryan set quarter section post, deposited charcoal, dug pits and trench, built mound and planted osage orange seeds at corners of the mound.

May 19, 1930. Lew Merrill surveyed in Section 25, Township 116, Range 31 and his notes show the corner to be half way between the section corners.

October 11, 1939. E.L.Higgins surveyed in Section 30 and his notes show the corner to be half way between the section corners.

September 13, 1985. We found nothing at the corner. We measured the west line of Section 30 and set an iron pipe on line and midway between the section corners. Our distance to each section corner was 2662.46 feet compared with 1930 distance by Merrill of 2662.9 and 1939 distance by Higgins of 2662.5 feet. We took reference ties to the iron pipe.

May 13, 1986. We replaced the iron pipe with a McLeod County cast iron monument.

March 7, 1989. We found the monument in good condition and the reference ties good.